

SOUTH AUSTRALIAN RAILWAY MODELLERS' ASSOCIATION INC.

PROMOTING THE HOBBY IN SOUTH AUSTRALIA



A Hot Wednesday Evening at Dernancourt

**After You've Gone
Small Parts Storage Tin
Snap!
Dimboola
Swapmeet Report**



The Buffer Stop

SARMA Inc. meets on the **SECOND WEDNESDAY** of each month at 7.30 p.m in the ‘**Log Cabin**’ building on Lyons Road, Dernancourt, at the corner of Balmoral Road. Modelling nights are held on other Wednesday nights in the shed adjacent to the log cabin. See the Diary on Page 2 for details.

UBD Map 96 Ref D12: the red Scout symbol marks our clubroom.

Membership rates 2009 – 2010

Joining Fee:	\$10.00	Corporate:	\$80.00
Full:	\$60.00	Pensioner Concession:	\$45.00
Family:	\$70.00	Country Concession:	\$45.00
Junior:	\$30.00	Student Concession (full time; 16 years and over):	\$45.00

The Membership Year runs from 1 April to 31 March.

Quarterly pro-rata rates apply to new members after 30 June each year.

All correspondence and membership enquires should be addressed to:
The Honorary Secretary, SARMA Inc., P.O. Box 4, Prospect, S.A., 5082.
SARMA Telephone InfoLine: (08) 8411 5500

Visit our web site at <<http://www.sarma.asn.au>> for more information and a membership form.

Webmaster: Peter Michalak <petemichalak1987@gmail.com>

“Buffer Stop” Contributions

Email address: <bufferstop@internode.on.net>

We welcome contributions from members. Articles and photographs may be emailed to the address given above; they can also be submitted on paper. Members who forward articles written by, or photographs taken by, a third party are asked to obtain permission for their publication. Contributions may be subject to editing. Neither the Association nor the Editors accept any liability for the content or presentation of notices, articles and advertisements submitted for inclusion in the Buffer Stop other than those submitted by the Committee on behalf of the membership. Nor do the Association and the Editors necessarily subscribe to the views expressed or implied by contributors. The Editors reserve the right to refuse acceptance of any material that is considered unsuitable for publication. Material may have to be held over to a later edition.

Advertising rates: full page \$40, half page \$20, quarter page \$10.

The deadline for each issue is the last Friday of the previous month.

Committee Members 2009 – 2010

President: Hugh Williams Phone: 8271 5327 email: hswilliams@optusnet.com.au	Layout Director: Dean Schluter Phone: 8336 1802 email: sloots@adam.com.au
Vice President (Special Projects): Iain Kennedy Ph: 0417 844 214 email: sarails@bigpond.com	Exhibition Layout Director: Bob Houston Phone: 8268 7813 email: bobhouston@adam.com.au
Vice President (Administration): Roger Wheeler Phone: 8356 9044 email: rawheeler.grange@hotmail.com	Maintenance Director: David Vander Linden Phone: 0419 847 619 email: david@vanderlinden.id.au
Secretary: Peter Pickering Phone: 8344 7625 email: peterp23@bigpond.com	Social Director: Barrie Mackinnon Phone: 8298 8571 email: barrie@picknowl.com.au
Treasurer: David Jameson Phone: 8251 5592 email: dvjammo@adam.com.au	Editors: Harry Rush Phone: 8337 5868 email: jywhittaker@optusnet.com.au
Librarian: Allan Norris Phone: 8346 1742 email: addnor@optusnet.com.au	Chris Marlow Phone: 8362 3484 email: marlowc@internode.on.net

AMRE Representatives: Peter Pickering; Phone: 8344 7625; email: peterp23@bigpond.com
Allan Norris; Phone: 8346 1742; email: addnor@optusnet.com.au

The Library may be accessed in the adjacent shed before the club meeting.

Contents

3	Minutes of the October meeting	9	Signal Control – Correction
4	From <i>The Buffer Stop</i> Archives	9	AGM Photo
5	SARMA Sales	10	What Would You Do?
5	Library Report	12	Photos from Dimboola
6	After You've Gone	14	SwapMeet Report
6	<i>Toy Trunk Railroad</i>	15	BBQ Rules
7	Small Metal Case	16	Bits and Pieces
8	SARMA Web Page	17	Photo Page

Diary

Wed 9 December: SARMA Family Mystery Bus Trip

Wed 16 December: BBQ at Dernancourt



Bring your own food.
Iain's fridge will be open for
drinks and chocolate sales.

Wed 6 January: Modelling Night/Layout Night

Wed 13 January: General Meeting

Thank you to W.P. Crowhurst for supplying anti-graffiti
paint for the railway stations in the vicinity of Hawthorn.

– Hugh Williams



Down the Track...

2010, March 5 – 8:
Sandown

2010, June 12 – 14:
AMRE

2010, September 3 – 11:
Grain Board Layout
Royal Adelaide Show

2010, September 11:
Modelling the Railways of SA
Convention,
Flinders Medical Centre

2010, October 2 – 4:
AMRA Exhibition, Sydney

2010, October 9 – 10:
Noarlunga Model Railroaders
Exhibition

Our thanks go to Terry Meads for organising and running our 15th Annual SARMA Swapmeet. His report of this successful event is on page 14.

A merry Christmas and a happy New Year to members and friends of SARMA. Maybe this is the year that Santa will bring you that brass locomotive at last. Depends if you've been good.

We are now a year closer to establishing ourselves in new premises than we were at this time last year. Let's hope that this coming year will be the one. It's been a frustrating wait for us all.

Chris and Harry.

Cover Photo:

During the November heatwave, the big doors of Galvey Hall were opened up to make the place bearable. The big industrial fan also helped, and Iain's fridge shop was very popular.

The Buffer Stop

SOUTH AUSTRALIAN RAILWAY MODELLERS ASSOCIATION Inc.

MINUTES OF GENERAL MEETING HELD AT DERNANCOURT ON 11 NOVEMBER 2009

Meeting opened at 7.40pm by Hugh Williams.

Members in attendance - 46

Apologies - 6

Visitors - Stuart Gamble, Ken Arthur

New members: Peter Starr (already accepted & paid up – this is his first meeting as a member; Ken Arthur – Proposed John Badcock, seconded Karl Eichinger, carried.

Minutes of previous meeting: Moved Iain Kennedy, Seconded Dean Schluter, Carried.

Outstanding Actions and Business arising: nil

Correspondence in:

- Telstra – MessageBank account
- End of the Line Hobbies – Voucher
- Tea Tree Gully Council – Application form for use of premises
- Model Railroader – December 09

Correspondence out: nil

Business from correspondence: nil

Finance: Financial statements presented.

Accept financial report: Moved David Jameson, Seconded Dean Schluter

Reports:

Premises – Still progressing

Exhibition Layout – Sandown acceptance received. Renovations progressing.

Club Layout – nil

Social –

- Christmas Dinner (refer page 12 of Buffer Stop)
- Mystery Trip (refer page 11 of Buffer Stop)

BufferStop – nil report - Chris and Harry not present.

Library – nil report

Maintenance – nil report

Bulk buys – HO sheep are now in stock

Special Projects:

Swapmeet– (Enfield High School Gymnasium on Sunday 22nd Nov 09): 60 tables taken (a record).

Members reminded that set-up will commence at 7.00am.

AMRE - October minutes not yet received (Bill Lewis was absent from last meeting). Treasurer still sought.

General Business:

- Rocky River Models 8300 brake vans for sale. Moved Trevor Carter, seconded Bob Houston that the club purchase one.
- Modelling the Railways of South Australia Convention will be held on 18th September next year.
- Break: Meeting suspended at 8.22pm for raffle draw, AGM, members' display of models and pictures of South Australian trains presented by Peter Michalak. Numerous members displayed a wide variety of models; a random draw of participants for an End of the Line Hobbies voucher was won by Trevor Carter.

The AGM, the minutes of which will be posted on the notice board at the January 2010 GM, was a brief affair as the previous committee members were all re-elected unopposed. The President and Returning Officer addressed the meeting. The Secretary's report was published in the November Buffer Stop. The Treasurer will give his full report at the January 2010 GM.

Raffle:

D79	Brian Woods	Coasters
D16	John Venning	Kit
C17	Karl Eichinger	Track rubber
D38	Darren Barnes	Junction Models
		Voucher
D57	Ken Arthur	Couplers

Meeting closed at approximately 10pm.



50 Years Ago: December 1959

- General Business: Various members received “Thank Yous” for the efforts put into the club functions — TV quiz night, YMCA Exhibition, and to all who helped.
- The Christmas Dinner went off very well, and all enjoyed themselves.
- Mal Mead regrets to say that this is the last *Buffer Stop* that he will be printing.
- B.J. Ward Ltd., trading as Mastermodel, have brought out structures in kit form under the name of “Clarewood Kits.”
- Airfix has a station canopy.
- The Hobby Shop has Hornby Dublo Engine Shed in kit form at 31/6, a plate-layer’s hut at 1/6, and a breakdown crane at 58/6. Many Athearn models are on their way, including Budd railcar sets.

40 Years Ago: December 1969

- The front cover features T253 shunting at Terowie, and 856 about to start a photo run at the Gumbowie Bank.
- Tony Sitters has an interesting article on the SARMA rail tour per goods train with 22 members: Adelaide – Terowie – Peterborough – Gladstone – Port Pirie – Snowtown – Bowmans – Virginia – Adelaide.
- Eric Milne has a four page article on the gradients, tunnels and bridges of Britain, Switzerland, Italy, U.S.A. and New Zealand.
- Bob Burton’s HOn2½ model of the “Puffing Billy” is now complete, and it made its first run at the clubrooms. (Scale is 3.5 mm:1 foot; track gauge is 9 mm.)
- It seems that the Christmas Dinner at a city hotel turned out to be a Lightning Affair and a Chef’s Nightmar. [Don’t ask us; ask Whib...]

30 Years Ago: December 1979

- Stan W. wrote the editorial in the absence of Geof P., and he has a report on the overpass at the Penfield Signal Box: it is now open for the “passing parade” to use.
- It’s that time of the year again, when we hope for a brass loco in the Christmas stocking! (I had to put mine together again as it fell through the hole in the end on to the concrete floor.)
- The committee meeting was held at Don Snow’s “counting house.”
- The committee is pleased to announce an increase in the number of articles for *The Buffer Stop* — thank you.
- Who spotted the SARMA member on the TV coverage of the Round Australia Rally?
- Prototype track laying is being done by an Italian tracklaying machine in W.A. Between Kwinana and Koolyanobbing, it strips up, reshapes and relays track in one operation in 100 metre bites, at six bites per hour, five hours per day; that’s 3 kilometres per day.

20 Years Ago: December 1989

- Timetable for Wednesday evenings: construction of passenger cars.
- Layout Report: The inaugural train went through the Grosvenor yard as the last movement of the controlled running night. The narrow gauge sidings still have to be laid and wired.
- John Looker has an article and photos of the Two Wells station yard and a track diagram.
- A diagram of a tricycle converted to motor drive.
- The Fete Layout is for sale, \$30, cash and carry.

[Archives continued next page]

The Buffer Stop

From The Buffer Stop Archives (continued)



Whib

- A sheet cork supplier is at hand: Taunton Products, Prospect Road, Kilburn. Sheets measure 914 mm (3 feet) by 610 mm (2 feet), in various thicknesses: 3 mm @ \$4.40; 4 mm @ \$4.40; 4.5mm @ \$5.80.
- Various attempts at Channel Tunnels have been watered down....

10 Years Ago: December 1999

- Front cover: a photo of DL41 standing at Spencer Junction, Port Augusta on a sunny afternoon in June 1995 on its final leg from Brisbane to Perth.
- Timetable: December 8th – family night and BBQ at the clubrooms.
- Photos by Stuart Flower of Puffing Billy 7A at Belgrave and at Lakeside.
- Bill Lewis has an article about Milang and its railway history.
- SARMA's swapmeet at Windsor Gardens in October had a good roll-up and enough visitors to raise the bank balance.
- The S.A. Plastic Modellers Association exhibition at C.B.C. in Wakefield Street included model aircraft, ships, submarines, cars, trucks, military and sci-fi exhibits, and a huge 60 mm calibre artillery piece on two flat cars, from the German Army of WW2.



SARMA SALES

See Iain Kennedy



SARMA Pin Badges	\$7.00	Kadee #5 Couplers	\$4.60
"Rails and the River" Medallion	\$15.00	Delrin Bearings	\$5.30
Bogies:		11'6" Underframe Kits	\$6.30
40 ton Round Lid, Solid Wheels	\$11.80	PVA Glue, 2 litres	\$20.00
ANR XC	\$11.80	No. 2 self tapping screws, packs of 100:	
W Car Bogies	\$11.80	4.5 mm	\$7.00
SEM Axles 10.5 x 25 mm	\$1.10	6 mm	\$8.00
Decals for SAR M, MG	\$2.50	9.5 mm	\$10.00
Decals for SAR O, OB, OG, OX	\$2.50	Packs of 20:	
SEM GY Kit	\$15.00	2-56 UNC 3/8" pan head screws	\$4.00
SEM UB Van Kit	\$21.00	2-56 UNC nuts	\$5.00
SEM E Wagon Kit	\$22.00	Packs of 4 HO sheep:	\$9.00

WANTED

Videos or DVD

Steam in South Australia, Parts 1 & 2

Australian Railway Archives Series, Parts 1, 2 & 3

I have South Australia in the 1960's, Part 4

Allan Norris

After You've Gone

Peter Pickering

A couple of months back I wrote about the value of putting together a log with, primarily, details of your models. Around the same time, Tim Shackleton, well respected editor of *Model Railway Journal*, a British fine scale magazine, wrote of his concerns about the disposition of models *after you've gone*.

Would your carefully built and/or maintained locomotives and rolling stock finish up among the battle-scarred items at a swap-meet? Would your exquisite structures recline among the Superquick discards?

I like to think that, within the club scene or where a modeller enjoys social intercourse with those of like interests, there would be some recognition of a model's value and it would pass on to someone who would appreciate it.

Tim's suggestion was to assign individual models to specific people who would most appreciate them. The problem here, of course, is how to do it, particularly as you don't really know whether the lucky individuals are going to kick the bucket

before you do. This is where the log comes in. You could make a note against any particular item who the preferred recipient is to be, then if the intended recipient is unwilling or unable to accept it, it could be donated or sold to a club or sold through the most appropriate channels according to your wishes. A log can be updated very easily if circumstances change and you can refer to the log in your will to tie it down if you wish.

How do you know who would most appreciate a particular model or group of models (a complete train, perhaps)? Well, if you were invited to see or operate a friend's layout and it was obvious that some of your models would be at home there or, perhaps, would fill a gap, there's one answer. If a friend openly admires a particular model and you think it would suit his layout or collection, there's another.

You may not care what happens to your models after you've gone but I, for one, would feel happier knowing that my models are going to a good home and that I might be remembered by the models that I've donated.



www.toytrunkrailroad.com



– reproduced by permission of Erik Sansom.

**GENERAL MEETING NIGHTS
PRE-MEETING DINNER**

***** Note change of venue *****

Members and visitors are invited to join us
for dinner from 5.30 p.m. at the
Bremen Hotel
1210 Grand Junction Road,
Hope Valley,
just west of Valley Road,
each meeting night
while we still meet at Dernancourt.

Why not come straight from work to our
clubrooms (any time after 4.00 p.m.) and
assist us in collating this magazine,
prior to the dinner.

Non-regolars please ring 8298 8571
no later than 11.00 a.m. that day.

Barrie Mackinnon,
Social Director.

Australian National Drawings

The drawings once held by Australian National are now
available to the Public.

This includes both the SAR and CR drawings.

Types of drawings:

Rollingstock outlines	Curve & Gradient
Wagon and Locomotive	Station Yard Plans
Construction Drawings	Plan & Sections
Electrical	Buildings
Steam	Bridges
Signals	Maps

These plans are available to research and copy at

Inprotrans Pty Ltd

320 Churchill Road, Kilburn, SA 5084

(The old Islington Railway Workshops)

www.inprotrans.com
Phone: 8343 5349

Email: mark@inprotrans.com
Fax: 8343 5354

Small Metal Case

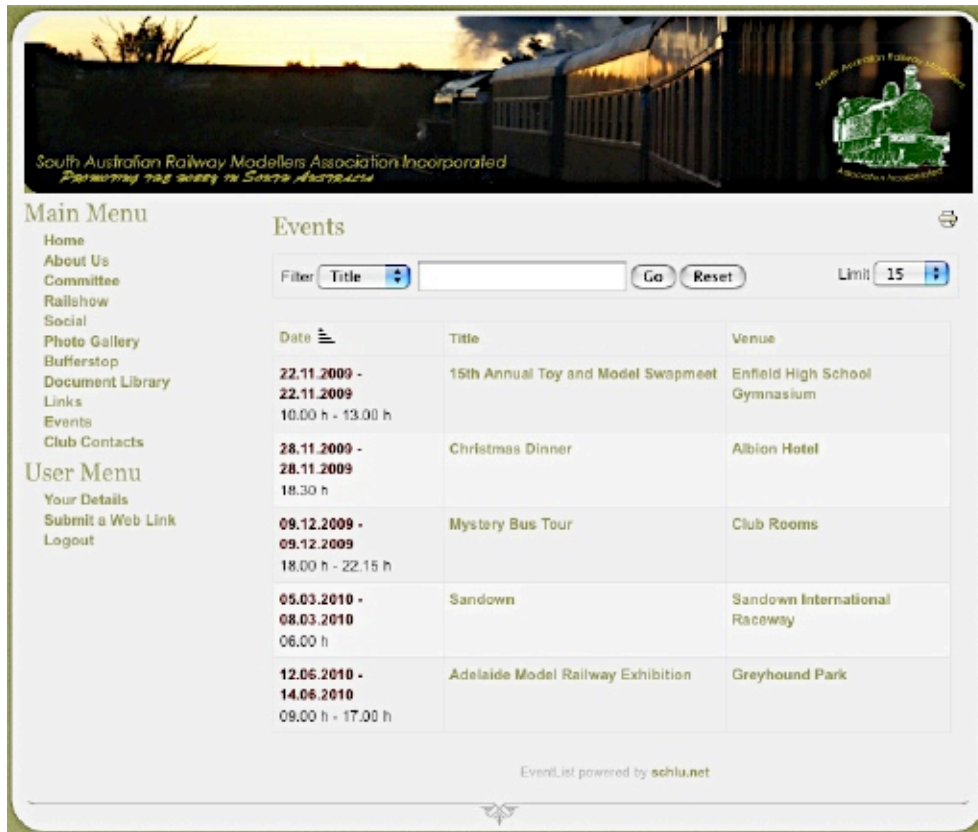
P.I.T.

You don't get many small metal containers
nowadays. I stumbled across this one in Coles lolly
aisle recently. It measures about 75mm x 40mm x
25mm, has a lid hinged at one end, and it costs a bit
over \$2.

Oh yes; it also comes with quite pleasant mints that
you will have to dispose of in some way.



The Buffer Stop



Date	Title	Venue
22.11.2009 - 22.11.2009 10.00 h - 13.00 h	15th Annual Toy and Model Swapmeet	Enfield High School Gymnasium
28.11.2009 - 28.11.2009 18.30 h	Christmas Dinner	Albion Hotel
09.12.2009 - 09.12.2009 18.00 h - 22.15 h	Mystery Bus Tour	Club Rooms
05.03.2010 - 08.03.2010 06.00 h	Sandown	Sandown International Raceway
12.06.2010 - 14.06.2010 09.00 h - 17.00 h	Adelaide Model Railway Exhibition	Greyhound Park

Keep an eye on what Pete Michalak has been doing to the club's website at <http://www.sarma.asn.au>.

He has added a Document Library, from which you can download a copy of the membership application form, and also a copy of the travel reimbursement form.

You'll also find an Events page, with a calendar of forthcoming events that SARMA will be involved with.

Don't forget: if you have any good photos of SARMA activities, or prototype shots, get them to Peter at petemichalak1987@gmail.com.

November Model Display

photos by Sloots



Hugh Williams' 710



Ian Wade's lighted carriages

Colour Light Signal Control - Correction

Dean Schluter

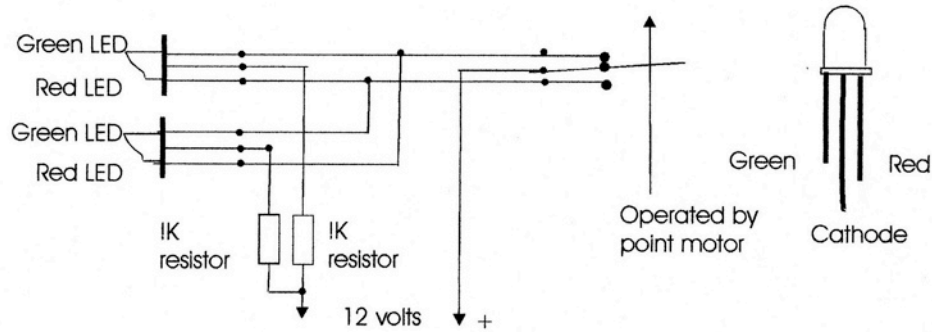
In my last month's article on controlling signals I made a Schluter Schlip-Up for which I am sorry.

In the diagram of controlling a dual head signal to indicate access to a loop. I should have drawn a 1k ohm resistor for each LED

of the dual head signal, not a common resistor for both.

The corrected diagram is as below, with a drawing of what the connections of a dual colour LED are.

Dean.

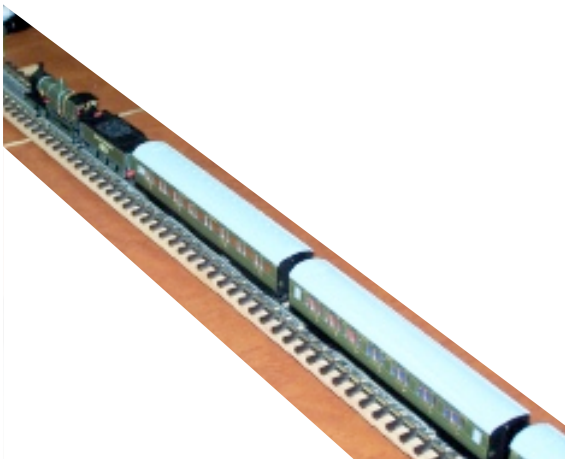


2009 AGM

The 2009 AGM was held on Wednesday 11th November.

The Committee for 2009 - 2010 was elected without any change.

The photo shows the outgoing (and incoming) executive members, David, Hugh and Peter, just before positions were declared vacant.



November meeting model display:

Pommy stuff exhibited by Peter Pickering.

SR in SW colours, for those who are interested.

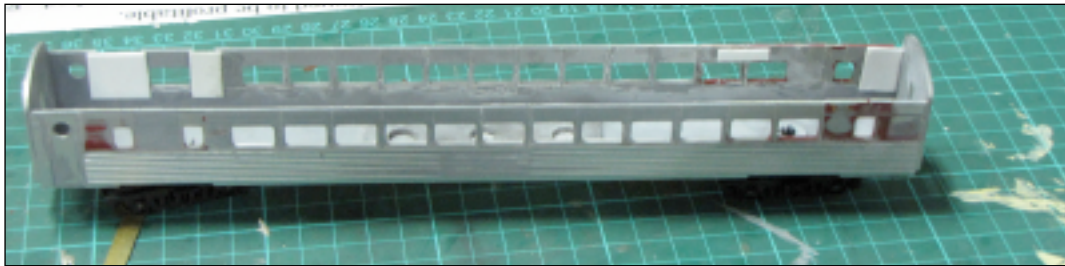
Photos: Dean Schluter.

The Buffer Stop What Would You Do?



At a recent Wednesday work night, Peter Michalak was working on a carriage, converting it from a *Southern Aurora* car to an *Overland* car, when he pressed a bit too hard, and ... snap! He didn't raise his voice or throw a tantrum; he just put the pieces to one side and went on with something else.

At the next Wednesday work night, he produced this:



He had added parts of the snapped carriage to another *Aurora* car, to make an *Overland* car with the correct number of windows.

THE BUFFER STOP

The Buffer Stop is available each month for downloading from the SARMA website, as a pdf file. In this format, it is not fully suitable for reading on the screen, as you have to keep scrolling up and down. Some time ago, we received a request to put the electronic version into landscape (horizontal) format so that one page fitted on to the screen, but when we tried it, it turned out to be so time consuming and unsatisfactory that we did not proceed with it. Our intention in providing it in this way is so that members can print out their own full colour copy. The photos are better than those reproduced by the club's photocopier.

Contact the editors or the webmaster for download instructions.

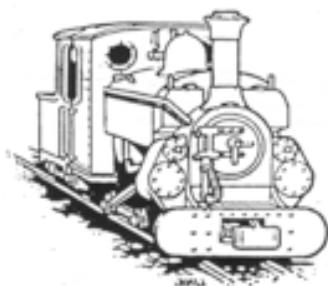
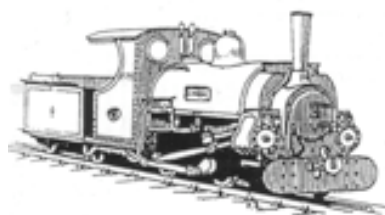
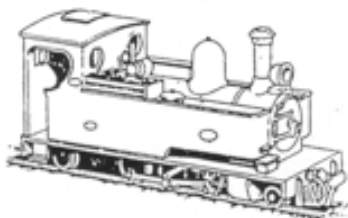
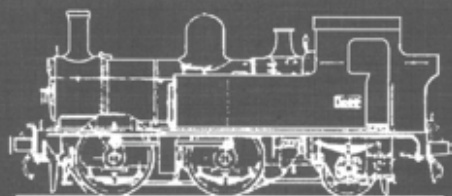
Junction Models

Shop 5, 449 Main North Road, Enfield Plaza, Enfield 5085

Phone 08 8349 7464 Fax 8349 7463

Email: mail@junctionmodels.com.au

Web site: junctionmodels.com.au



Specials for December 2009.

Bachmann Train Set "McKinley Explorer"\$150.00

„ „ „ „Chattanooga"\$155.00

Hornby "Devon Belle Pullman" \$315.00

„ „ „Talisman"\$255.00

„ „ „Local Freight"\$80.00

„ „ „Goods Master".....\$99.00

Dapol N "Voyager" HST set \$395.00

Magnifier, Large illuminated, multi-position \$109.00

„ Junior „ „bendy stalk" \$57.50

Pace controllers-Powered single w/meters \$179.00

„ „ - „ dual \$179.00

„ „ - Single Hand held \$59.50

Athearn Snowplows-various names \$56.00

Heljan English Diesel Locos - any one for\$190

Bachmann "Thomas the Tank" locos and rolling stock- "cheep"

Proto 2000 2-10-2 Steam Loco any name - Standard DC\$280

Proto 2000 - U28B or U30B locos, with DCC & Sound\$320 each.

Athearn GP35 Locos - any name \$105

„ GP38-2 Locos - S/Fe, CSX, CP \$85

„ SD45 Locos - UP, SP, Reading, Southern, Erie, GN, ...\$128.00

„ SW1500 "Southern", "CSX" + "Missouri Pacific"\$145.00

„ All Genesis units single or double pack 20% off inc. SD45-2's

„ N Gauge Rolling stock, big range, 20% off retail.

Rivarossi Locos- All less 35%

Plenty of model cars/trucks/ etc. in stock and coming .

Wiking Police cars Like VN Commodore \$18each.

We stock San Mateo Line signals 12% off retail.

~~~~~

A Merry Christmas and a Happy and Safe New Year

Brian, Harry & Vic.



**Scenes from Dimboola**



Nice to see an AN loco again. Where have they been hiding? This one was trailing two cabless X class and a boring NR class.



The two XRBs.



Poor old GM36 still in its original paint, with "Comrail" whited out, relegated to one end of the ballast hopper set.



VR C501 on the other end of the ballast hoppers.  
How's that for history?



If the make-do Dimboola buffer stop won't stop them, the tree might.

**Give Away to a Good Home**

21 years of *Model Railroader*  
& 21 years of *AMRM*,

1987 – 2007.

Contact Chris Marlow.

## Library Report

Allan Norris

### Recent Additions to the Library:

|                            |            |
|----------------------------|------------|
| Australian Railway History | Nov 09     |
| Australian Railway History | Dec 09     |
| A M R M                    | Dec Jan 09 |
| Dispatcher (SANGS)         | Nov 09     |
| Model Railroader           | Dec 09     |

GREAT MODEL RAILROADS 2010 (Model Railroader)

SOUTH AUSTRALIAN DIESEL PICTORIAL  
From 'Piping Shrike' to Pacific National and beyond

**DVDs, Videos, Books & up to four Magazines to be charged at \$1 per month.**

## End Of The Line Hobbies

**74 Ocean Street, Victor Harbor**

**Wednesday thru to Sunday**

**10:00am to 4:30pm**

**Ph: 85527900**

**Fax 8552 7933**

Model Trains, Track & Accessories

DCC controllers, decoders (including sound)

Model Kits (Trains, Planes, Ships, Boats, Military Vehicles, Cars & Trucks)

R/C Vehicles (Gas & Electric), R/C boats & yachts, R/C Planes & Helicopters

Spare parts & Fuel

Scalextric and Die Cast Collectable Cars

Books, Magazines and DVDs

Model Paints, Brushes & Air Brushes

Scratch building materials, balsa

Modelling equipment, tools and glues

For all ages beginner to expert

Come in and have a look around, chat to Paul and Rodney about your modelling needs.

Email: [shop@endofthelinehobbies.com.au](mailto:shop@endofthelinehobbies.com.au)

Web: [www.endofthelinehobbies.com.au](http://www.endofthelinehobbies.com.au)

When making a purchase, identify yourself as a member of SARMA,  
and receive a 5% discount.

In addition, SARMA will receive a voucher to the same value.



## 15<sup>th</sup> Annual Swap Meet Report 2009

Terry Meads

The change to the Enfield High School has proved very popular for this, the second swap meet at this venue. We had 30 traders booking 61 tables, which is a record since we began swap meets back in 1995.

I had designed a floor plan for 67 tables since using this venue, which can be expanded slightly as we have very generous aisles with the current layout.

In fact I could have used the full plan of 67, but the odd regular and new people left it too late in the last few days when everything was set to go! (We did advertise in the Saturday paper for 4 Saturdays leading up to the event).

As with every year there are always a few minor problems. This year we were supplied with 13 ten foot tables and 2 seven footers (expecting all 8 footers). The plan this year was to fill the whole hall by introducing extra access spaces in the rows across the hall. It took a few minutes to work out where to use the 10 footers and revert back to 'plan A' still filling the hall which looked impressive.

After last year when some 'would be' traders just came for a look, they actually traded this year and were happy with their sales!!

This year (maybe because of the excellent venue?) some regulars increased their area from two to three tables. One increased from two to four!

One or two had to be moved around after the set-up as a trader's wife came in place of her husband and needed assistance from a friend who was also trading. They then had 4 tables together.

We are now hoping that the "Super School" scheme won't affect our successful swap meet at this venue in the future!

**Photos: Terry Meads**



## **BBQ RULES**

We are about to enter the BBQ season. Therefore it is important to refresh your memory on the etiquette of this sublime outdoor cooking activity.

When a man volunteers to do the BBQ, the following chain of events is put into motion:

### **Routine...**

- 1 The woman buys the food.
- 2 The woman makes the salad, prepares the vegetables, and makes dessert.
- 3 The woman prepares the meat for cooking, places it on a tray along with the necessary cooking utensils and sauces, and takes it to the man who is lounging beside the grill – beer in hand.
- 4 The woman remains outside the compulsory three metre exclusion zone where the exuberance of testosterone and other manly bonding activities can take place without the interference of the woman.

### **Here comes the important part:**

- 5 THE MAN PLACES THE MEAT ON THE GRILL.

### **More routine...**

- 6 The woman goes inside to organize the plates and cutlery.
- 7 The woman comes out to tell the man that the meat is looking great. He thanks her and asks if she will bring another beer while he flips the meat.

### **Important again:**

- 8 THE MAN TAKES THE MEAT OFF THE GRILL AND HANDS IT TO THE WOMAN.

### **More routine...**

- 9 The woman prepares the plates, salad, bread, utensils, napkins and sauces, and brings them to the table.
- 10 After eating, the woman clears the table and does the dishes.

### **And most important of all:**

- 11 Everyone PRAISES the MAN and THANKS HIM for his cooking efforts.
- 12 The man asks the woman how she enjoyed "her night off." And, upon seeing her annoyed reaction, concludes that there's just no pleasing some women....

– from somewhere on the internet.

## The Buffer Stop

### **TC's SPECIAL CASH DEAL ON BILL DICK SIGNALS**

Trevor is offering a once only deal on colour light target signals as advertised recently. Single for \$17 and Double for \$20. Catch him at the Mystery Tour or ring him on 8250 5504. But be quick.



### **SLOOTS SAYS:**

Interested in using LEDs for headlights? Have a look in the December issue of AMRM for small, bright, warm-white LEDs.

### **FROM THE SAR WORKING TIMETABLE, EFFECTIVE 2nd DECEMBER 1929:**

#### **RUNNING OF CARS BETWEEN ADELAIDE AND MILE END WITHOUT A BRAKEVAN AT REAR.**

Up to five (5) eight-wheeled cars may be HAULED between Adelaide Passenger Yard and Mile End Freight Yard and Loco Sidings and Torrens Bridge Junction without a brakevan at the rear.

The cars must be fully equipped with the Westinghouse air brake, properly coupled and in effective operation.

A shunter must accompany the train, and ride on the engine or rear car, as may be most convenient.

The rear car must carry two (2) marker lamps, both by day and night. The lamps must be lighted at night.

The engineman, and the signaller at the Adelaide "Y", and Mile End Junction Signal cabins, must be advised of the number of cars attached. The Signaller must check the number of cars as they pass, and observe whether the two Marker lamps are at the rear of the last car. In the absence of these lamps it must be assumed that the train is not complete, and action taken accordingly.

### **SCALE AND GAUGE**

#### **Scale:**

The ratio between the sizes of the model and the prototype.

For HO the scale can be given as 1:87, or 3.5 mm:1 foot.

#### **Gauge:**

The distance between the inside edges of the rails, e.g. for SAR broad gauge, 5'3" which is 1600 mm. HO scale uses a track gauge of 16.5 mm, which represents a prototype gauge just over 4'8", very close to standard gauge 4'8½". In HO, the SAR broad gauge 5'3" scales to a track gauge of 18.4 mm.



**November Model Display**

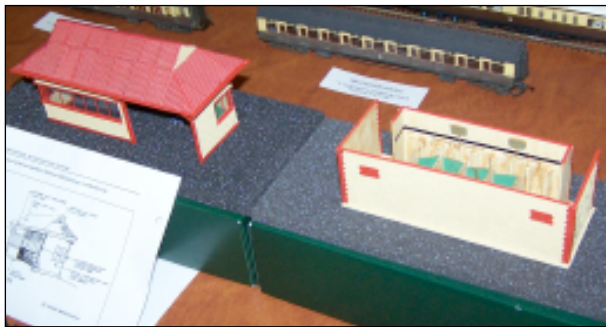
Dean Schluter



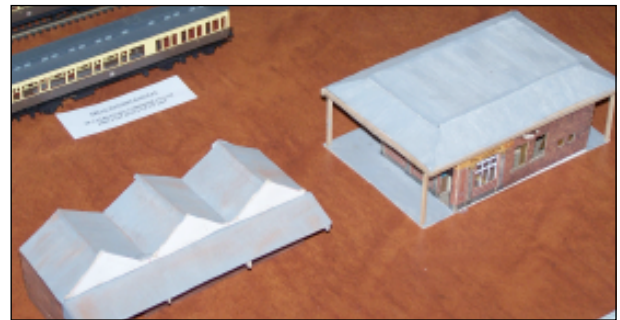
Another Whib Wonder



Terry Meads' English Stock



Paul Mackinnon's station shelter and dunny.



Buildings by Treven Barnes



Signal Box by David Vander Linden  
Vic DERM & Trailer by Terry Jomartz



Rear: Wagons by Trevor Carter  
Front: OMN & ON Ore Wagons by Tim Leach  
(Tim says that there were 17 errors in these wagons; he's fixed 15 of them)